

3mm Rubber & 5mm Rubber/Cork/Foam Underlayments

The following installation instructions are a recommendation, but are not intended as a definitive project specification. They are presented in an attempt to be used with recommended installation procedures as published by (NOFMA) the National Oak Flooring Manufacturers Association and the National Wood Flooring Association (NWFA).

SUBFLOOR

1. All subfloor work should be in accordance with the recommended procedures as published by NOFMA and the NWFA.
2. Concrete subfloor should be level, properly sloped and structurally sound.
3. Inspect concrete subfloor for any open cracks and fill with a high-grade epoxy filler.
4. Remove any excess concrete lumps or residue that may interfere with the installation of the finished floor or the AcoustiCORK underlayment.

TESTING FOR MOISTURE

1. Test the subfloor for excessive moisture prior to the installation of the AcoustiCORK underlayment.
2. If excessive moisture is present (normally >3 lbs. per 1000 s/f in 24hrs) in the subfloor, a vapor-retarding barrier must be installed to correct the problem. Consult the project architect or flooring manufacturer for details.

VAPOR RETARDING BARRIER

1. Consult the most recent NOFMA & NWFA Installation Manuals for methods and materials associated with use of vapor retarding barriers.

PERIMETER ISOLATION BARRIER

1. Install the precut 3" wide, 6mm thick perimeter isolation barrier vertically around the perimeter of the entire floor including any openings or protrusions such as electrical boxes, heating ducts, cold air returns, columns or pipes in the subfloor. The perimeter isolation strip **MUST be installed prior** to AcoustiCORK underlayment product being installed.
2. Starting from one end of the room, unroll the 3" isolation barrier material and place flat against the wall and flush to the floor.
3. After positioning, tape or staple (very close to the top edge) the isolation barrier firmly into place at all wall and vertical partitions surrounding the perimeter.
4. Never permanently mechanically fasten the isolation barrier, as this can severely diminish the acoustical performance of the sound rated floor.

5. After the floor is installed trim the isolation barrier flush with the surface of the finished floor, removing any staples or mechanical fasteners that were used to temporarily hold it in place.

ACOUSTICORK RCLT 500 or RR300 UNDERLAYMENT for NAILED DOWN HARDWOOD FLOORS

1. Cut the 5mm AcoustiCORK RCLT 500 or 3mm RR300 material to the desired length and position the material in the space to be covered.
2. Butt the AcoustiCORK underlayment against the perimeter isolation barrier already installed at the floor/wall junction
3. Proceed to cover the entire room, making sure the sheets are tightly butted together, without gaps. Tape the joints with duct or fiberglass mesh tape. **For this type of installation it is recommended that the sheets not be glued to the subfloor.**
4. After completion, the AcoustiCORK RCLT 500 or RR300 underlayment should cover the entire flooring area without gaps and with the joints taped.

PLYWOOD SUBFLOOR (Nailing Bed)

1. Consult the most recent NOFMA or NWFA Installation Manuals for materials and methods associated with the installation of a plywood subfloor, as is commonly used with a Nailed Down Hardwood Floor applied over a radiant heated floor system or concrete subfloor. *Generally, two layers of 3/8" or 1/2" plywood are loose laid on the AcoustiCORK material and cross-lapped, either perpendicularly or on the diagonal, leaving a 1/4" gap at the joints. The two layers are fastened and/or adhered together using a fastener that is long enough to penetrate both layers of plywood, but not penetrate the AcoustiCORK underlayment product. (It is also possible to use a single layer of 3/4" plywood.)*

NAILED DOWN WOOD FLOOR INSTALLATION

1. Follow manufacturers recommended instructions for the finished floor, including any vapor retarding membrane as required by the manufacturer.
2. Never drive a mechanical fastening device through the plywood nailing bed and the AcoustiCORK underlayment and into the subfloor, as this will severely diminish the acoustical value of the system.
3. If a baseboard or shoe molding detail is required leave a minimum 1/8" gap between the finished floor and the bottom of the baseboard or shoe. This gap cant be filled with a non-hardening, color matching, paintable or clear Acoustical Grade Sealant.

AcoustiCORK™ PRODUCTS

Sound Control Underlayment & Crack Suppression Membrane

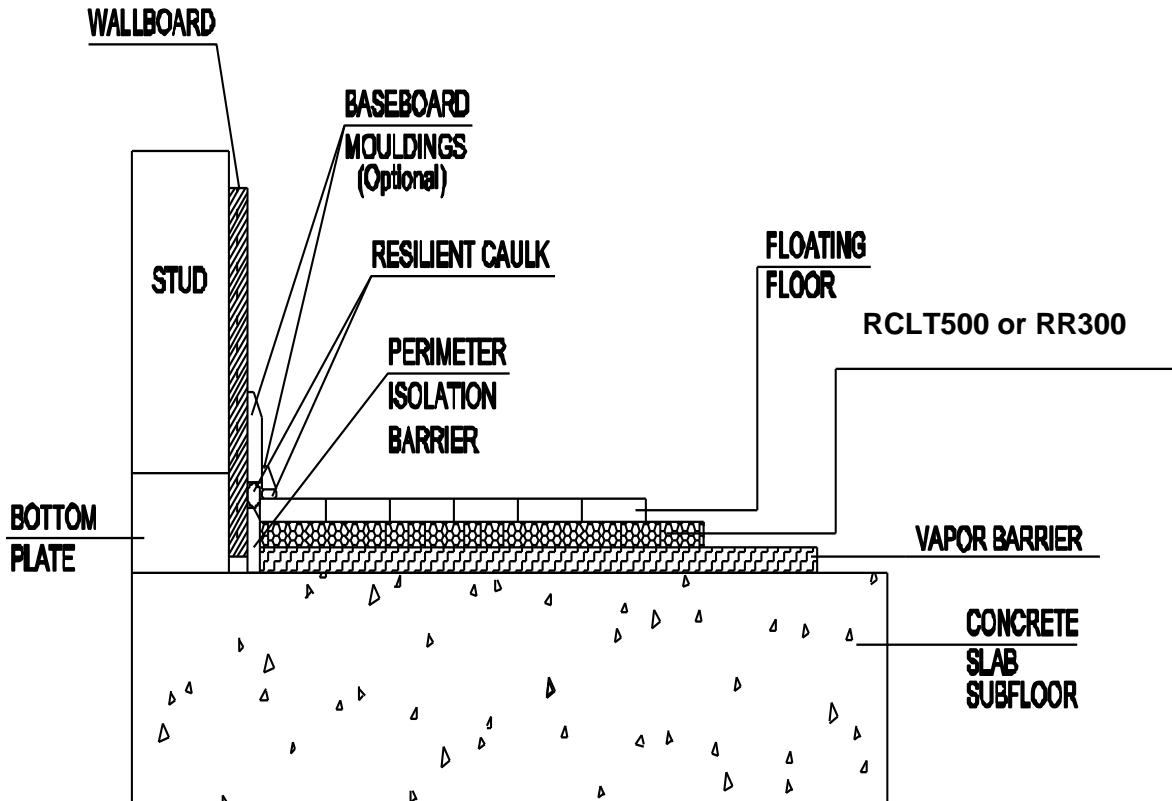
26112 110th Street • PO Box 25 • Trevor, WI 53179 • 1-800-558-3206 • 1-262-862-2311 • FAX 1-262-862-2500

Visit our Website at www.acousticorkusa.com for the most complete information on AcoustiCORK™

AcustiCORK™ RCLT/RR Series

3mm Rubber & 5mm Rubber/Cork/Foam Underlayments

INSTALLATION INSTRUCTIONS
Nailed Down Hardwood Floors
on a Concrete Slab Subfloor



AcustiCORK™ PRODUCTS

Sound Control Underlayment & Crack Suppression Membrane

26112 110th Street • PO Box 25 • Trevor, WI 53179 • 1-800-558-3206 • 1-262-862-2311 • FAX 1-262-862-2500

Visit our Website at www.acusticorkusa.com for the most complete information on AcustiCORK™